

s. 84 EN331

2.1/2" - 4" full port hot forged brass ball valves



Quality:

- 24h 100% seal test guaranteed
- Dual sealing system allows valve to be operated in either direction making installation easier
- No metal-to-metal moving parts
- No maintenance ever required
- Handle clearly shows ball position
- Silicone-free lubricant on all seals
- Chrome plated brass ball for longer life
- Travel stops on body to avoid stresses at stem

Body:

- Hot forged sand blasted, nickel plated brass body and cap sealed with Loctite or equivalent thread sealant
- Finest brass according to EN 12165 and EN 12164 (formerly DIN 17660 and UNI 5705-65) specifications

Stem:

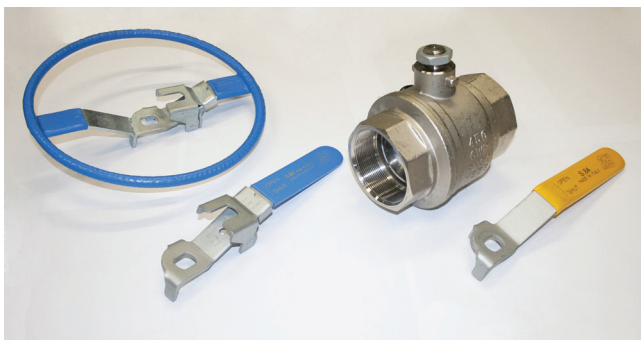
- Blowout-proof nickel plated brass stem
- Two FPM O-rings at the stem for maximum safety

Seals:

- Pure PTFE self-lubricating seats with flexible-lip design

PED Directives:

- Assessment according to Pressure Equipment Directive 97/23 CE module B+D by Pascal (1115)



Threads:

- EN 10226-1, ISO 228 parallel female by female threads

Flow:

- Full port to DIN 3357 for maximum flow

Handle:

- Geomet® carbon steel handle with thick PVC dip coating. Handle coating offers both thermal and electrical protection

Working Pressure:

- 30 Bar (450 PSI)
- non-shock cold working pressure
- For use with dangerous fluids temperature rating is -20°C +60°C and pressure rating is 5 Bar

Working Temperature:

- -40°C (-40°F) / +170°C (+350°F) Warning: freezing of the fluid in the installation may severely damage the valve

Options:

- Patented locking device
- Male by Female threads
- Round lockable handle

Upon Request:

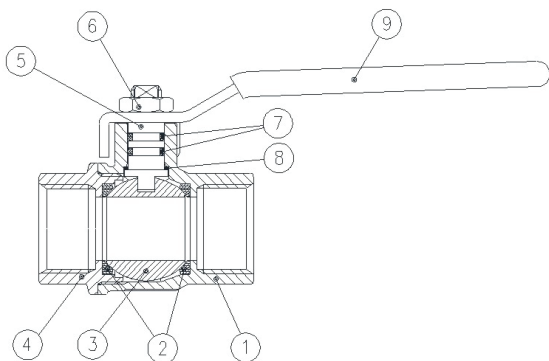
- Glass filled PTFE ball seals
- Custom Design

Approved by or in compliance with:

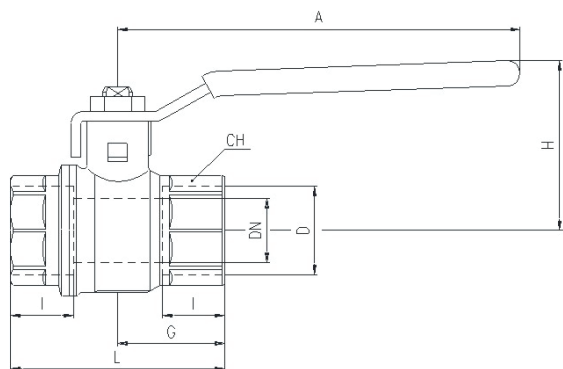
- The Australian Gas Association (Australia)
- Water Regulation Advisor Scheme (United Kingdom)
- GOST-R (Russia)
- Rostekhnadzor (Russia)
- Hygenic (Russia)
- UkrSepro (Ukraine)

• RoHS Compliant

NOTE: Approvals apply to specific configurations only



Part Description	Q.ty'	Material
1	1	CW617N
2	2	PTFE
3	1	CW617N
4	1	CW617N
5	1	CW617N
6	1	CB4FF
7	2	FPM
8	1	PFTE
9	1	DD11

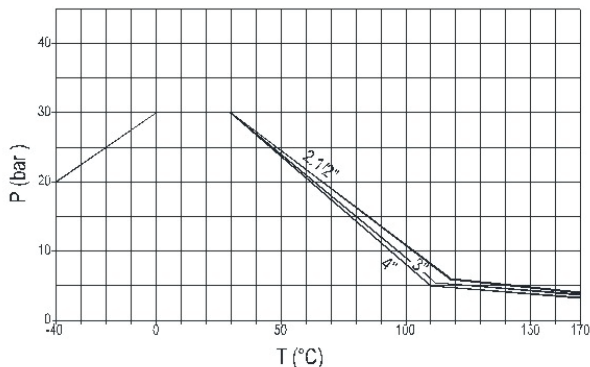


Code	S84L00	S84M00	S84N00
D (Inch)	2 1/2	3	4
DN(mm.)	65	80	100
I (mm.)	32	35	41.5
L (mm.)	156	177	216
G (mm.)	78	88.5	108
A (mm.)	255	255	255
H (mm.)	132	140	154
CH(mm.)	85	99	125

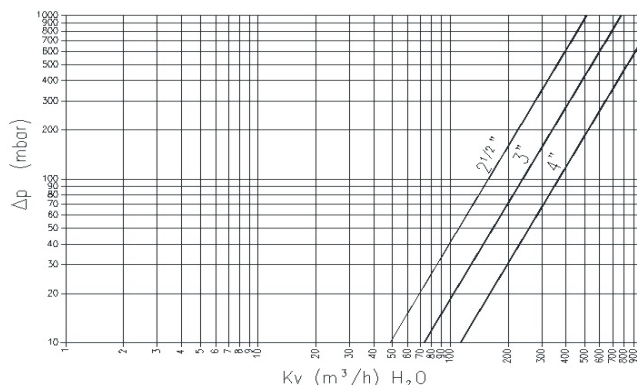
DN shows the nominal flow diameter. Actual flow diameter complies with full port DIN 3357 part 4.

Ball valves are marked CE on body as follow: CE 1115 cat IIIB+D PS: 5 GAS TS1: -20°C TS2: +60°C

Pressure-Temperature Chart



Pressure Drop Chart



The company reserves all rights for the information contained herein. Products may be changed at any time without notice. Any undated reference to a code or standard shall be interpreted as referring to the latest edition. RuB and logo are registered trademarks of RuB-Rubinetterie utensilerie Bonomi. Others logos are property of respective owners.

