

s. 7400 3 Way Diverting

1/2"-1" standard port

hot forged brass ball valves

RuB s.7400 range is the right choice for fluid diversion. It is designed with robust maintenance-free components ensuring ease of operation and safety.

With a simple 90° turn, one can divert flow from one downstream outlet to the other. It combines traditional manual operation with modern automation.

In fact, it is very easy to convert from its steady lever handle to actuator ISO 5211 flange assembly. It features low operating torque and a special self-compensating seat design that successfully passed 100,000 cycle life tests.

You can purchase the valve alone or with the RuB actuator already mounted.



Quality:

- Electronic 100% seal test guaranteed
- No metal-to-metal moving parts
- No maintenance ever required
- Silicone-free lubricant on all seals
- Chrome plated brass ball for longer life

Body:

- Hot forged sand blasted, nickel plated brass body and cap sealed with Loctite or equivalent thread sealant
- ISO 5211 and DIN 3337 mounting flange for universal connection to actuator
- Finest brass according to EN 12165 and EN 12164 (formerly DIN 17660 and UNI 5705-65) specifications
- 3-way L design for flow diversion

Stem:

- Blowout-proof nickel plated brass stem
- Two FPM O-rings at the stem for maximum safety

Seals:

- Reinforced PTFE self-lubricating seats with flexible-lip and wear compensation design

PED Directives:

- The product meets the requirements of PED Directive 97/23 and according to art.3 par.3, it does not require CE marking

Threads:

- EN 10226-1, ISO 228 parallel female by female threads

Flow:

- Full port 1/2" size, standard port others

Handle:

ISO 5211 actuator mounting pad allow direct mounting of RuB electric and pneumatic actuators, with no bracket or coupling required

Working Pressure:

- 30 Bar (450 PSI)
- non-shock cold working pressure

Working Temperature:

- -20°C (-4°F)
- +170°C (+350°F)
- Warning: freezing of the fluid in the installation may severely damage the valve

Options:

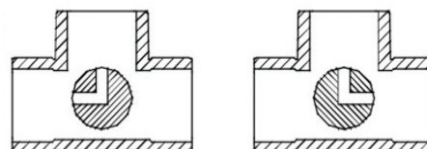
- Rack and Pinion pneumatic actuator (Spring return or double acting)
- Compact Power electric actuator
- Lockable handle
- Stainless trim
- Direct actuator mounting ISO 5211
- Adapter flange kit with screws

Upon Request:

- Custom Design



S.74 3-way "L" port mounting plan

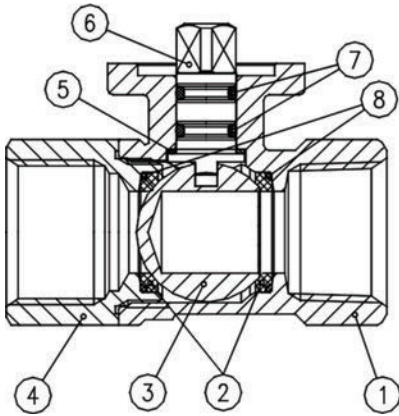


Approved by or in compliance with:

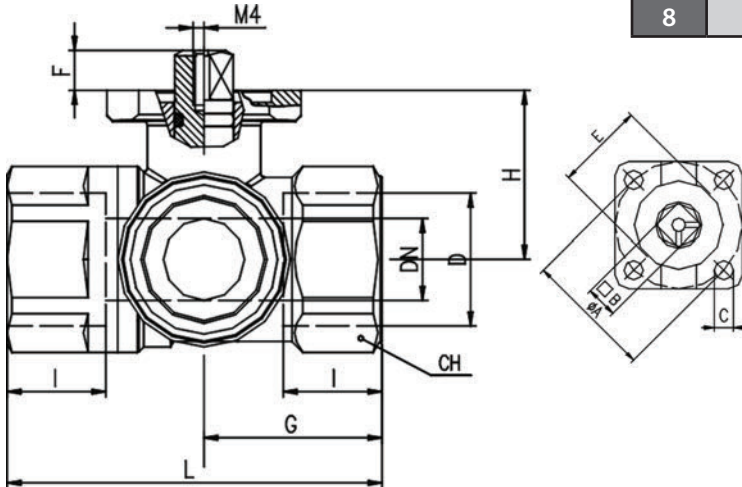
- GOST-R (Russia)
- Rostekhnadzor (Russia)
- Hygenic (Russia)
- UkrSepro (Ukraine)
- RoHS Compliant

Ask for additional information on the whole range of RuB valves and consult with your supplier for special applications.

NOTE: Approvals apply to specific configurations only



Part Description	Q.ty	Material	
1	Nickel plated body	1	CW617N
2	Ball seat	2	PTFE graphite filled 15%
3	Chrome plated ball	1	CW617N
4	Nickel plated end cap	1	CW617N
5	Washer	1	PTFE carbon filled 25%
6	Nickel plated stem O-ring design	1	CW617N
7	O-Ring	2	FPM
8	O-Ring	2	FPM



Valve code	S74D00	S74E00	S74F00
D (Inch)	1/2	3/4	1
DN(mm)	15	15	20
I (mm)	15.5	18	21
L (mm)	67	69.5	82
G (mm)	33	33	41
H (mm)	31	31	38.5
CH (mm)	31	31	37
ØA(mm)	36	36	36
□ B(mm)	9	9	9
C (mm)	5.6	5.6	5.6
øE(mm)	25	25	25
F(mm)	7.5	7.5	8.5
Flange connection DIN ISO 5211 DIN 3337	F03	F03	F03

Torque for Actuator Sizing - N.m

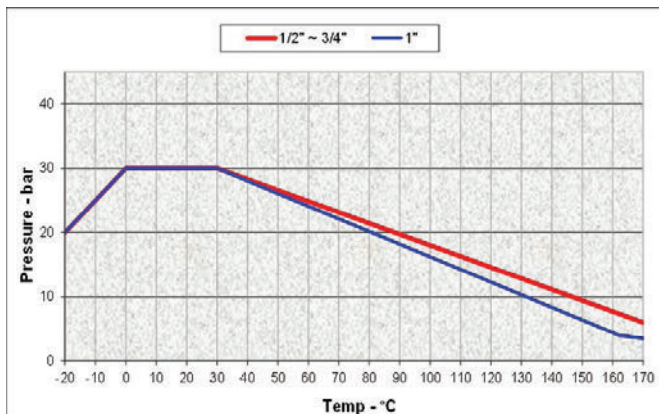
Delta P →	0 ÷ 30 bar	
	To open	To close
Valve size		
1/2"	3,1	1,8
3/4"	3,1	1,8
1"	4,1	2,3

Torque correction factor

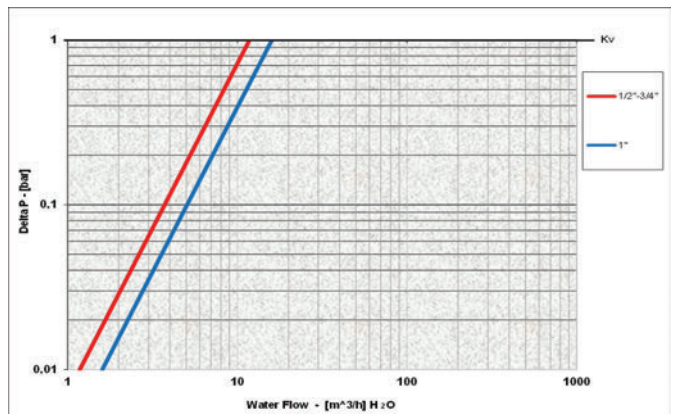
Valve torque can vary according to operating frequency, temperature, and friction characteristics of the media. If media has more or less friction than water, multiply torque by the following factors.

- Lubricating oils or liquids** 0.8
- Dry gases, natural gas, superheated steam** 1.5
- Slurries or liquids bearing abrasive particles** 1.5-2.5

Pressure-Temperature Chart



Pressure Drop Chart



The company reserves all rights for the information contained herein. Products may be changed at any time without notice. Any undated reference to a code or standard shall be interpreted as referring to the latest edition. RuB and logo are registered trademarks of RuB-Rubinerterre utensilerie Bonomi. Others logos are property of respective owners.

