

s.90 union connection
full port 1/2" ÷ 1.1/4"
hot forged brass ball valves



Stubby handle
for 1.1/4"

RoHS compliant

Features and Specifications:

- * **Hot forged** sand blasted, nickel plated brass body and cap sealed with Loctite,
- * Finest brass according to **EN 12165** and **EN12164** specifications,
- * **Full port** to DIN 3357 for maximum flow,
- * **24h 100%** seal test guaranteed,
- * Pure virgin **PTFE** self-lubricating seats with flexible-lip design,
- * Dual sealing system allows valve to be operated in either direction making **installation easier**,
- * Chrome plated brass ball for **longer life**,
- * **No metal-to-metal** moving parts,
- * **Blowout-proof** nickel plated brass stem,
- * Two FPM O-rings at the stem for **maximum safety**,
- * **No maintenance** ever required,
- * Handle stops on body to **avoid stresses** at stem,
- * **Geomet®** carbon steel handle with thick PVC dip coating,
- * Handle clearly shows **ball position**,
- * **ISO 228** Female by union male threads,
- * **Silicone-free** lubricant on all seals,
- * 40 bar (Kg/cm²) non-shock cold working **pressure**,
- * -40°C +150°C **temperature** (Warning: freezing of the fluid in the installation may severely damage the valve),

Options:

- * Stem **extension**,
- * **T-handle**,
- * **Oval lockable handle**,
- * **AISI 430 stainless steel handle**,
- * Patented **locking device**.

Upon request:

- * **AISI 316 stainless steel ball and/or stem**,
- * **Glass filled PTFE** seals,
- * Custom design.



ACCORDING TO
97/23 CE
module A

CE

it cannot be used with
dangerous gases in
sizes larger than 25mm.





RUBINETTERIE UTENSILERIE BONOMI SRL

VIA PADANA SUPERIORE, 27/29 - FRAZ. CILIVERGHE, 25080 MAZZANO (BS) - ITALY

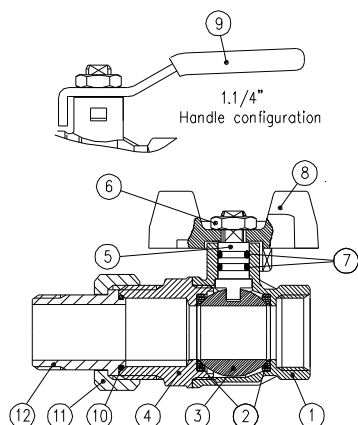
Fax+39 030 2629498

Phone+39 030 212441

www.rubvalves.com

sales@rubvalves.com

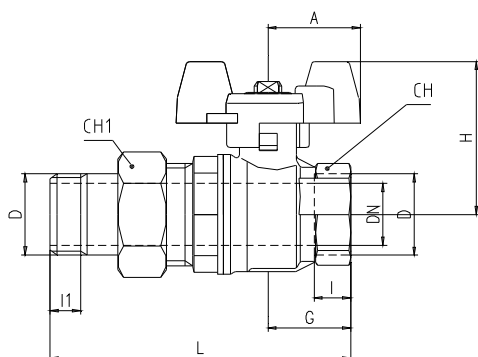
1.1/4" hollow ball



1.1/4 Ball valve is
Marked CE on handle
as follow

CE S90
Cat. I - A

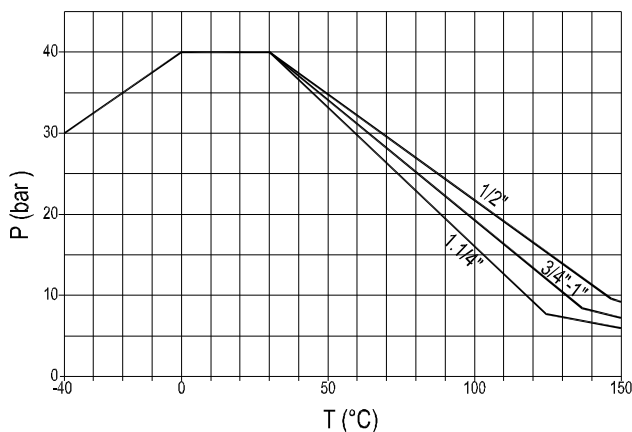
PART DESCRIPTION	Q.ty	Material
1 Nickel plated body	1	CW617N
2 Seat	2	Ptfe
3 Chrome plated ball	1	CW617N
4 Nickel plated end cap	1	CW617N
5 Nickel plated stem O-ring design	1	CW617N
6 Geomet® nut	1	CB4FF
7 O-ring	2	FPM
8 Red T-handle	1	Aluminium
9 Red PVC coated geomet® stubby steel handle	1	DD11
10 O-ring	1	EPDM
11 Nickel plated nut	1	CW617N
12 Nickel plated hose	1	CW617N



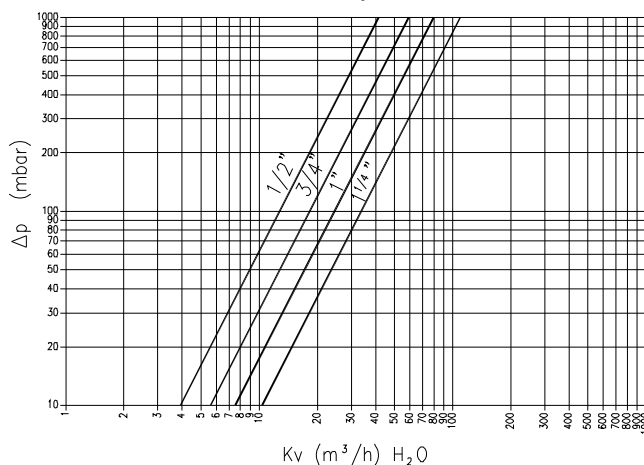
Code	S90D36	S90E36	S90F36	S90G36
D (inch)	1/2	3/4	1	1 1/4
DN (mm)	15	20	25	32
I1 (mm)	10	12	14	15
I (mm)	11	12	14	15
L (mm)	85	98	113	126.5
G (mm)	25	27	33.5	38.5
A (mm)	25	30	30	100
H (mm)	43	47	51	73
CH (mm)	25	31	38	48
CH1 (mm)	30	37	46	52

DN shows the nominal flow diameter. Actual flow diameter complies with full port DIN 3357 part 4.

Pressure -Temperature chart



Pressure drop chart



Ask for additional information on the whole range of RuB valves
and consult with your supplier for special applications.



PRINTED ON RECYCLABLE PAPER - The company reserves all rights for the information contained herein. Products may be changed at any time without notice.

Any undated reference to a code or standard shall be interpreted as referring to the latest edition.

XCES9036 - Revision: 0